

PROPAGATION OF RIGHT-LATERAL STRIKE-SLIP DEFORMATION TOWARDS THE INTERNAL PART OF THE LURESTAN ZONE, ZAGROS BELT, WEST IRAN

Reza ALIPOOR

*Assistant Professor, Faculty of Basic Science, Bu-Ali Sina University, Hamedan, Iran
rezaalipoor116@gmail.com*

Saeed MADANIPOUR

*Assistant Professor, Department of Geology, Tarbiat Modares University, Tehran, Iran
madanipour.saeed@modares.ac.ir*

Zahra GHASEMI

*Student of Tectonic Faculty of Basic Science, Bu-Ali Sina University, Hamedan, Iran
ghasemi.zahra9372@gmail.com*

Keywords: Earthquake, Strike-slip, Lurestan, Zagros, Amiran

INTRODUCTION

The NW-SE trending Zagros fold and thrust belt (ZFTB) in west Iran is result of the Neogene collision between the Arabian and Eurasian plates. Collision probably occurred in the middle Miocene followed by the continental shortening and oblique convergence to the trend of the belt. The overall convergence caused partitioning of the right-lateral strike-slip and shortening component on fault systems (Talebian and Jackson, 2002). In the northwestern ZFTB, the orogen-parallel strike-slip is concentrated on the main recent fault (MRF) zone with NW-SE trend. Generally, this strike-slip movement of the oblique convergence is not confined to the MRF but also partitioned in the external parts of the belt, as the Marekheil-Ravansar fault system in the Kurdistan area of the Zagros (Sadeghi and Yassaghi, 2016). After the November 12, 2017 Ezgeleh-Sarpol-e Zahab Earthquake (Mw 7.3) it became clear that the Cenozoic strike-slip faulting is not confined to the orogen-parallel NW-SE trending faults, but it is distributed along the N-S trending active faults in the more external parts of the ZFTB. The focal mechanism of some aftershock events of the Ezgeleh-Sarpol-e Zahab Earthquake indicates an N-S strike-slip movement. The question arises about the effect of these N-S strike-slip faults on the folded structures of the Lurestan zone. Therefore, this study focused on the N-S trending strike-slip faulting along the Amiran anticline in the internal part of the Lurestan zone.

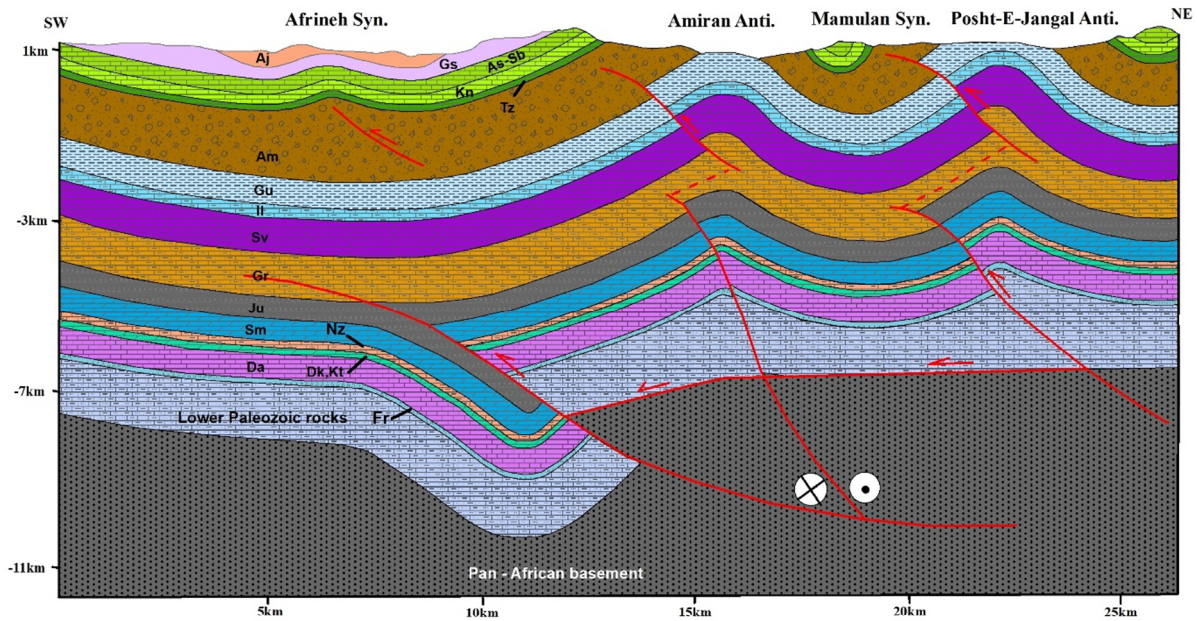
MATERIAL AND METHOD

Required data are obtained through field studies, geological maps, satellite images, well data, interpretation of seismic profiles and drawing regional geological cross sections.

DISCUSSION AND CONCLUSION

The Ezgeleh-Sarpol-e Zahab earthquake and aftershocks events indicating that the convergence in the Lurestan zone is not partitioned between thrust and orogen-parallel strike-slip faults. The strain partitioning accommodates a right lateral slip on the N-S trending faults. Our results highlight the presence of thin- and thick-skin shortening in the internal part of the Lurestan zone (along the Amiran anticline) as the thrust faults rooted within the detachment levels or originated from basement (Figure 1). Also, deformation pattern in the middle part of this anticline is accommodated as an N-S trending strike-slip faults as trend of this anticline changes from N130 in northeast to N110 in southeast. This nearly vertical strike-slip fault originated from basement thrust faults and cuts up-section to the surface. Thus, the Zagros basement and basal decollement in the internal part of the Lurestan zone actively contributed in continental shortening and the activity of multiple intermediate detachment levels in the sedimentary cover promotes a partly decoupled deformation.





Legend

Cenozoic	Quaternary	Pleistocene	Aj	Aghajari.FM	Mesozoic	Cretaceous	Gr	Gurpi.FM	Paleozoic	Permian	Da	Dalan.FM
		Tertiary	Pliocene	Gs			Gachsaran.FM	Ilam.FM		Carboniferous	Fr	Faraghan.FM
	Oligocene		As-Sh	Asmari-Shahbazan.FM		Sarvak.FM	Devonian	Lower Paleozoic rocks		LPR		
			Eocene	Kn		Kashkan.FM	Garau.FM				Silurian	
	Paleocene	Tz	Taleh zang.FM	Ju		Jurassic evaporites	Ordovician					
Triassic	Nz	Neyriz.FM	Sm	Surmeh.FM	Cambrian	Pan - African basement						
	Dk,Kt	Dashtak,Khanehkat.FM	Fr	Lower Paleozoic rocks	Neoproterozoic	Pan - African basement						

Figure 1. Geological cross section from the internal part of the Lurestan zone. Strike-slip and thrust faults originated from the pan-African basement.

REFERENCES

Sadeghi, S. and Yassaghi, A. (2016). Spatial evolution of Zagros collision zone in Kurdistan, NW Iran: constraints on Arabia Eurasia oblique convergence. *Solid Earth*, 7, 659-672.

Talebian, M. and Jackson, J. (2002). Offset on the main recent fault of NW Iran and implications on the late Cenozoic tectonics of the Arabia–Eurasia collision zone. *Geophysical Journal International*, 150, 422-439.

